

Customer :

customer

Customer part :

customer part

Comment :

Comment

S1=1.45

S2=2.1

Tmax=456

Tp S2=495.0

PI=0.41

HI=112

Sample =1662.10

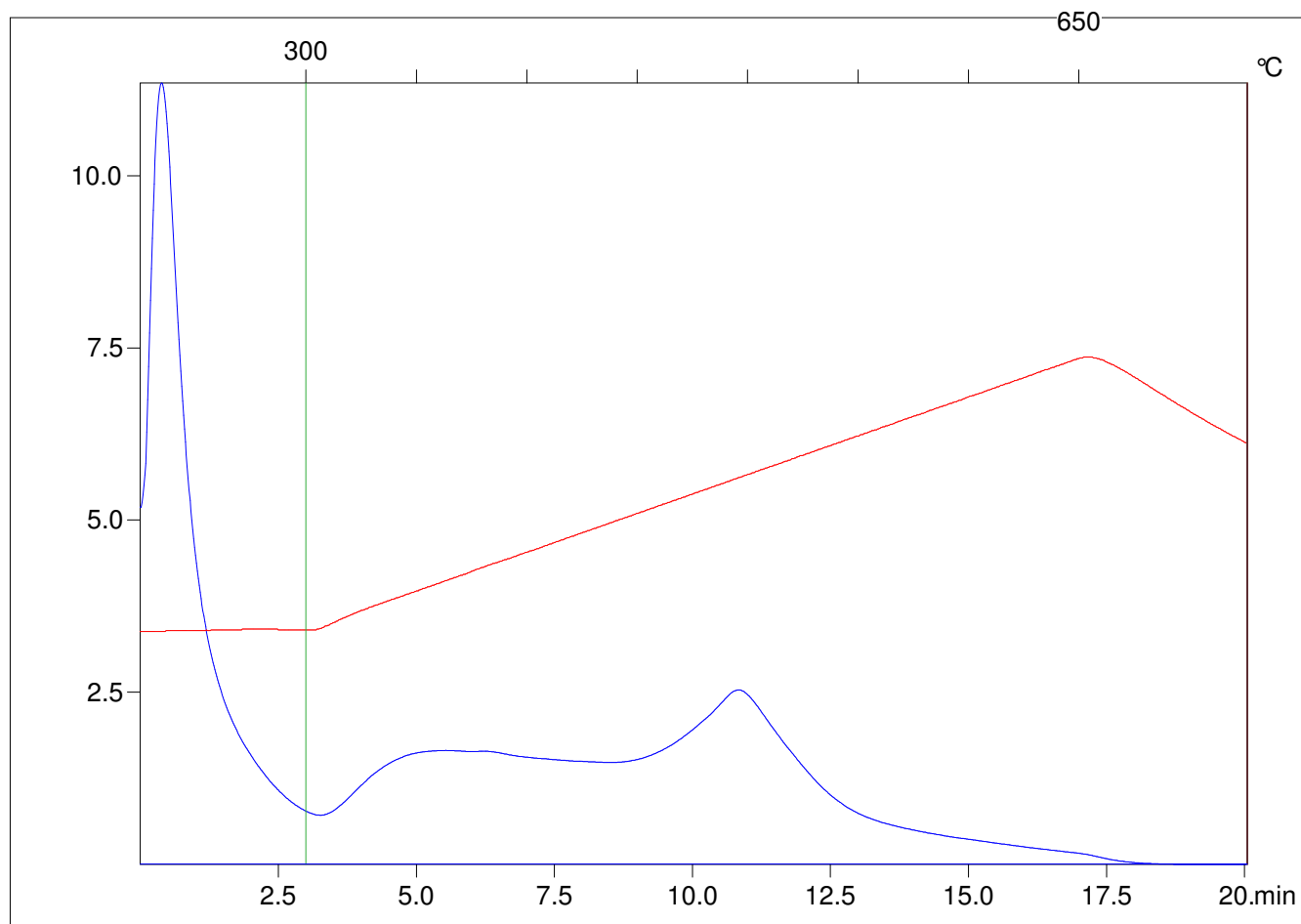
Method =Bulk Rock

Cycle=Basic

KFID(10*9)=1444

Qty =70.4

TOC=1.87



C:\VINC\PK1792\PK092.R00 : FID pyrolysis graphic

State

Pyro Status

Oxi Status